

CASE
CONSTRUCTION

CX C-SERIES HYDRAULIC EXCAVATORS

CX210C | CX210C LONG REACH | CX250C | CX250C LONG REACH

TIER
4i



CX C-SERIES HYDRAULIC EXCAVATORS

CX210C | CX250C

Clean power

Case C Series excavators use clean and efficient Tier 4 interim diesel engines.

Equipped with Cooled Exhaust Gas Recirculation (CEGR) and a diesel particulate filter, the engine is capable of meeting emissions regulations without the need for additional diesel exhaust fluids.

Automatic self-regeneration of the Diesel Particulate Diffusor (DPD) ensures no loss of productivity, while low engine rpm, improved hydraulic pump control and five new energy saving systems boost fuel economy by up to 10%.

A green economy gauge can be activated in the cab to inform the operator of the most economical operating mode setting for the machine, reporting fuel consumption in real-time.





CX C-SERIES HYDRAULIC EXCAVATORS

CX210C | CX250C

Advanced energy management

Through the use of 5 new fuel saving functions, C series excavators speed up productivity and substantially improve fuel economy. The new systems include:

Boom Economy Control (BEC)

Increased fuel efficiency during boom lower and swing operations.

Automatic Economy Control (AEC)

Improved fuel efficiency when servo joysticks are in neutral position and the operator is not calling for power from the machine.

Swing Relief Control (SWC)

Carefully manages the hydraulic power distribution at slewing operations, to provide the most efficient flow and pressure.

Spool Stroke Control (SSC)

Creates an automatic pressure adjustment during digging and leveling operations.

It saves fuel, while improving controllability for the operator in fine digging operations.

Idle functions:

All C-series excavators also feature Auto Idle and Idle Shut Down systems.

When activated, Auto Idle automatically lowers engine revs, whatever the throttle position, when the levers have been inactive for 5 seconds.

Manually, Idle can be activated by a switch on the joystick. Idle shut down, when activated, shuts down the engine when there has been no activity for 3 minutes, resulting in additional fuel savings.





Increased productivity

As part of the Case Intelligent Hydraulic System all Case C Series excavators benefit from improvements in performance and productivity.

Lifting capacity is increased and cycle times have been cut. Individual operating weights are slightly increased to cope with the additional digging and loading forces, ensuring stable, consistent high production for the customer.

Bucket and boom down regeneration systems feed hydraulic oil back to the supply side of the pump, reducing the requirement for engine power.

The C Series excavators use the familiar working mode control from the B Series machines, making it easy for the operator to become familiar with the new models. The Super Power Mode provides a 5% boost when required for maximum digging ability.

The new monitor in the C Series machines provides operators with the chance to pre-programme auxiliary hydraulic flow and pressure settings (option) for up to 10 attachments, providing rapid changeover and increased productivity.



CX C-SERIES HYDRAULIC EXCAVATORS

CX210C | CX250C



Tier 4 interim: lower consumption, top durability

The new Isuzu 4-cylinder engine meets EPA's Tier 4 interim without a need for additional diesel exhaust fluid.

The cooled exhaust gas recirculation (CEGR) in dual layer design effectively reduces NOx while PM is reduced by a diesel particulate filter (DPF) in combination with the variable geometry turbocharger. A diesel oxidation catalyst (DOC) treats carbon monoxide, hydrocarbons and other compounds.

Both components are integrated in the DPD (Diesel Particle Diffusor). Automatic self regeneration speeds your productivity - you can go on working as usual without stopping for the regeneration process of the particle diffusor. Side by side coolers, intercooler and the fuel cooler are now even more efficient thus further increasing our well appreciated durability.

A look under the hood immediately confirms an extremely efficient use of space: the engine, the cooling system and the exhaust system are all designed and grouped so as to take advantage of all the available space, while also granting excellent serviceability and operator visibility.

A ECO gauge can be activated on the new multifunction screen to inform you instantly about the key parameters concerning fuel economy and fuel consumption. Low engine rpm in combination with further improved pump torque control and further 5 new energy saving systems reduces the fuel consumption further by up to 10%.



First class serviceability

All filters and regular fill points are grouped for easy access, with engine oil change intervals set at 500 hours. A synthetic filter is used for the hydraulic oil, providing 5,000 hour intervals, and all pins and bushes (except the bucket pin) use the Case Extended Maintenance System bushings, allowing greasing intervals of up to 1,000 hours.

The radiator and cooler cores are mounted side by side, to allow easy access for cleaning and more efficient cooling. A 100 litre/min refuelling pump with automatic cut off is provided as standard, reducing downtime for regular fills.

The Japanese-built Case excavators boast an enviable reputation for reliability and durability, which looks set to continue with the new C Series of CX class crawler excavators.

CX C-SERIES HYDRAULIC EXCAVATORS

CX210C | CX250C

First class operator environment

The C Series cab is 7% larger than the previous models and uses a smaller top beam and no overlap in the front windows to offer improved all round visibility. Noise levels are reduced to almost automotive standards, around 70dB(A), while the operator has a suspension seat and fully adjustable levers as standard. Travel pedals require less effort, reducing fatigue for the operator.

The ROPS/FOPS level 1 certified cab sits on new suspension mounts. To reduce vibration for the operator and contribute to the lower internal noise levels.

The cab has a powerful air conditioning system with 25% more airflow and an 8% increase in performance.

New mirrors and a standard rear view camera, with optional side camera, improved 178 mm LED monitor inside the cab, providing the operator with a safe and secure working environment.





Full colour multifunction monitor

The standard 178 mm LED monitor provides all of the information that the operator needs at a glance. Easy to use buttons guide the operator through the screen functions and the monitor can be split to show the standard rear view, and optional side view camera images.

Information includes working mode, travel speed, working lights, attachment choice, time and working hours, along with system data such as coolant and hydraulic oil temperatures, fuel level and the condition of the particulate filter and the auto-regeneration function.

When selected, the ECO gauge displays the function of the various energy saving systems, allowing the operator to maximise efficiency and save fuel. The monitor can be set to work in one of 20 languages, and is also used by service technicians to access onboard diagnostic functions.



SiteWatch™

The Science Bit

The Case SiteWatch telematics system uses a high-tech control unit mounted on each machine to collate information from that machine and from GPS satellites. This data is then sent wirelessly through the mobile communication networks to the Case Telematics Web Portal.



SiteWatch: Centralised Fleet Control Benefits At Your Fingertips

Measure your true asset availability and optimise it

- Eliminate the “phantom fleet”: SiteWatch allows to identify spare units or under loaded machines on each site.
- Become able to reallocate units where they are more needed.
- Forward Maintenance Planning is easier since the actualised working hours are always available.
- Extend the benefits of SiteWatch to the rest of your fleet: SiteWatch can be installed on the units of other brands as well.

Challenge your Total Cost of Ownership!

- Being able to compare the fuel usage of different machine types will allow you choose the right equipment.
- Save on transport costs with planned and grouped maintenance tasks.
- Peace of mind, optimised uptime and lower repair costs: with preventive maintenance you can for example be alerted if the engine needs to be serviced and avoid a disruptive breakdown.
- Be able to compare your asset Return On Investment on different sites.
- Your equipment is used only during working hours. You can set up alerts so that you know if it is in use during the weekend or at night.
- Integrate with the programmed maintenance package, so that you can be sure every machine is at the right place at the right time.

More Safety, Lower Insurance Premium

- Keep thieves away: dissuade them from attacking your asset because it is geo-localised. SiteWatch is hidden so that thieves can't find it quickly.
- Your fleet is used only where you decide. You can define a virtual fence and receive an email when a machine exits that perimeter.



CX C-SERIES HYDRAULIC EXCAVATORS

CX210C





CX C-SERIES HYDRAULIC EXCAVATORS

CX210C

Specifications

Engine

Model _____ ISUZU AM-4HK1X
Type _____ Water-cooled, 4-cycle diesel, 4-cylinder in line,
Electronically controlled, high pressure common rail system, variable
geometry turbocharger, air cooled intercooler, dual exhaust gas
recirculation, DPD system with auto-regeneration. Tier 4 interim
certified.

Number of cylinders/displacement _____ 4/5.19 l

Bore/Stroke _____ 115 x 125 mm

Horsepower ISO 9249 _____ 119 kW/160 hp at 1800 min⁻¹

Maximum torque ISO 9249 _____ 621 Nm at 1500 min⁻¹

Hydraulic system

Max oil flow _____ 2 x 211 l/min @ 1800 min⁻¹

2 variable displacement axial piston pumps with regulating system

Working circuit pressure _____

Boom/Arm/Bucket _____ 34.3 MPa

Boom/Arm/Bucket (with auto power up) _____ 36.8 MPa

Swing circuit _____ 29.4 MPa

Travel _____ 34.3 Mpa

Swing

Maximum swing speed _____ 11.5 min⁻¹

Travel

Travel motor _____ Variable displacement axial piston motor

Max travel speed _____ 5.6 km/h (Automatic travel speed shifting)

Low travel speed _____ 3.4 km/h

Gradeability _____ 70% (35°)

Drawbar pull _____ 188 kN

Electrical system

Circuit _____ 24V

Alternator _____ 50 Amp

Undercarriage

Number of carriers rollers (each side) _____ 2

Number of track rollers (each side) _____ 8

Number of shoes (each side) _____ 49

Type of shoe _____ Triple grouser shoe

Capacities

Fuel tank _____ 320 l

Hydraulic system _____ 220 l

Cooling system _____ 30.8 l

Weight and ground pressure

With 2.40 m Arm , 1.0 m³ bucket, operator, lubricant, coolant, full fuel tank and top guard OPG level 2

| CX210C | Weight (kg) | Ground pressure (MPa) |
|---------------------|-------------|-----------------------|
| 500 mm grouser shoe | 20.760 | 0.048 |
| 600 mm grouser shoe | 21.200 | 0.044 |
| 700 mm grouser shoe | 21.640 | 0.039 |
| 800 mm grouser shoe | 21.940 | 0.035 |

With 2.40 m Arm , 1.0 m³ bucket, operator, lubricant, coolant, full fuel tank and top guard OPG level 2

| CX210C NLC Mono | Weight (kg) | Ground pressure (MPa) |
|---------------------|-------------|-----------------------|
| 500 mm grouser shoe | 21.500 | 0.053 |
| 600 mm grouser shoe | 21.940 | 0.048 |

With 2.40 m Arm , 1.0 m³ bucket, operator, lubricant, coolant, full fuel tank and top guard OPG level 2

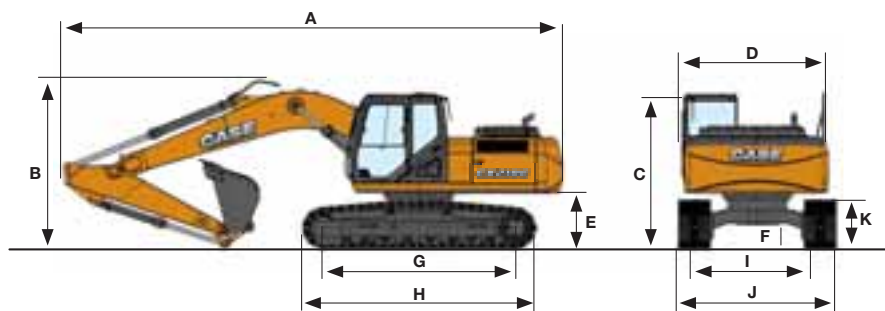
| CX210C NLC 2P boom | Weight (kg) | Ground pressure (MPa) |
|---------------------|-------------|-----------------------|
| 500 mm grouser shoe | 23.400 | 0.058 |
| 600 mm grouser shoe | 23.840 | 0.052 |

With 6.40 m Arm , 0.37 m³ Bucket, operator, lubricant, coolant, full fuel tank and top guard OPG level 2

| CX210C long reach | Weight (kg) | Ground pressure (MPa) |
|---------------------|-------------|-----------------------|
| 800 mm grouser shoe | 23.300 | 0.036 |

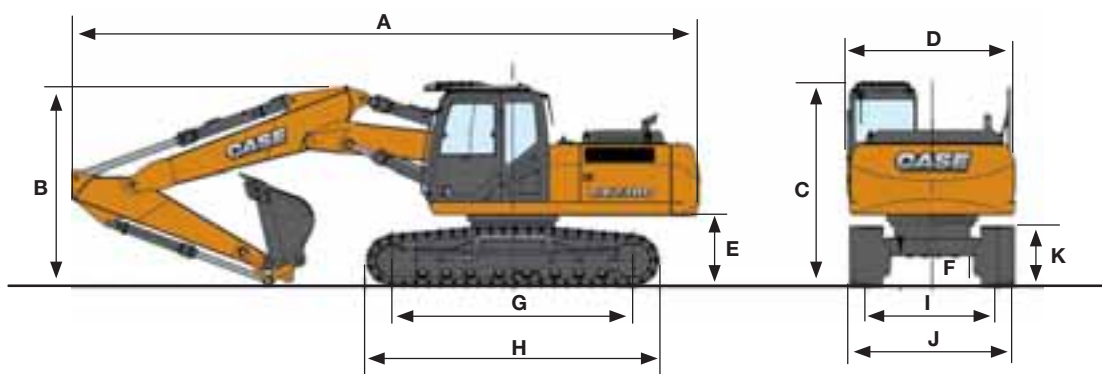
General dimensions

Monoboam



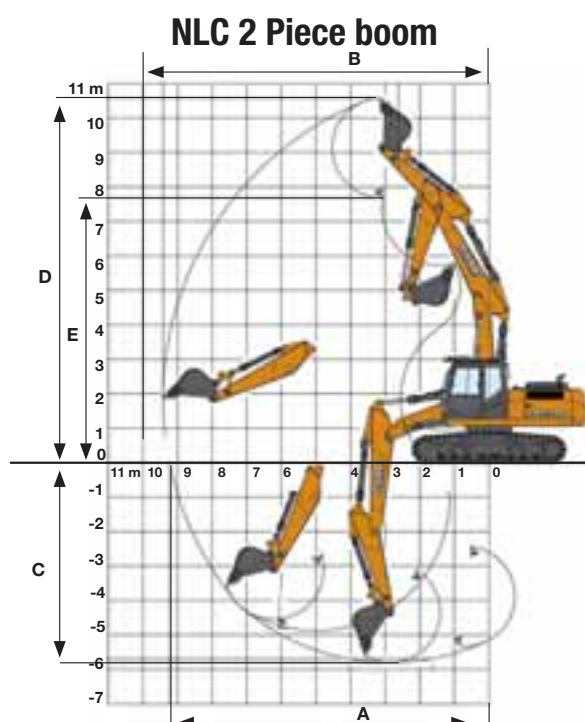
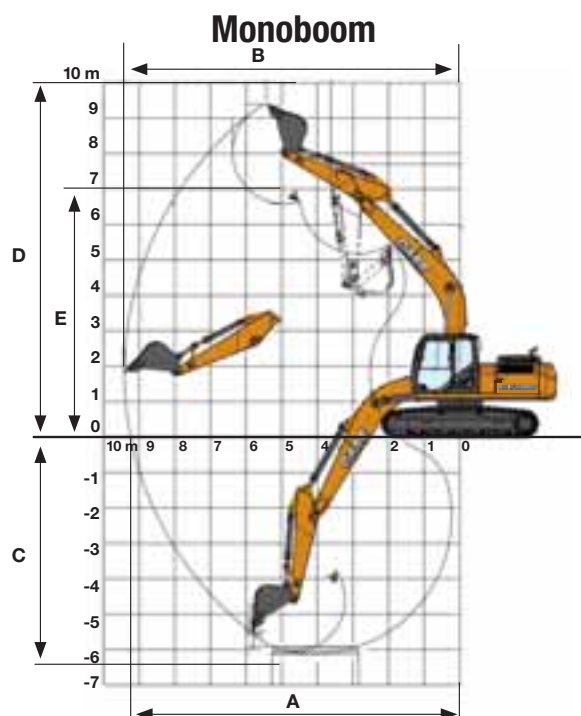
| | Arm 2.40 m | Arm HD 1.90 m | Arm 2.94 m |
|---|------------|---------------|------------|
| Overall length (without attachment) | 4960 mm | 4960 mm | 4960 mm |
| A Overall length (with attachment) | 9460 mm | 9490 mm | 9380 mm |
| B Overall height (with attachment) | 3200 mm | 3110 mm | 3000 mm |
| C Cab height | 3070 mm | 3070 mm | 3070 mm |
| D Upper structure overall width | 2770 mm | 2770 mm | 2770 mm |
| Swing (rear end) radius | 2750 mm | 2750 mm | 2750 mm |
| E Clearance height under upper structure | 1040 mm | 1040 mm | 1040 mm |
| F Minimum ground clearance | 440 mm | 440 mm | 440 mm |
| G Wheel base (Center to center of wheels) | 3660 mm | 3660 mm | 3660 mm |
| H Crawler overall length | 4470 mm | 4470 mm | 4470 mm |
| I Track gauge | 2390 mm | 2390 mm | 2390 mm |
| J Undercarriage overall width (with 500 mm shoes) | 2990 mm | 2990 mm | 2990 mm |
| I Track gauge NLC | 1990 mm | 1990 mm | 1990 mm |
| J Undercarriage NLC overall width (with 500 mm shoes) | 2490 mm | 2490 mm | 2490 mm |
| K Crawler tracks height | 920 mm | 920 mm | 920 mm |

NLC 2 Piece boom



| | Arm 1,90 m | Arm 2,40 m | Arm 2,94 m |
|---|------------|------------|------------|
| Overall length (without attachment) | 5060 mm | 5060 mm | 5060 mm |
| A Overall length (with attachment) | 9570 mm | 9540 mm | 9480 mm |
| B Overall height (with attachment) | 3100 mm | 3100 mm | 3100 mm |
| C Cab height | 3100 mm | 3100 mm | 3100 mm |
| D Upper structure overall width | 2540 mm | 2540 mm | 2540 mm |
| Swing (rear end) radius | 2830 mm | 2830 mm | 2830 mm |
| E Clearance height under upper structure | 1060 mm | 1060 mm | 1060 mm |
| F Minimum ground clearance | 430 mm | 430 mm | 430 mm |
| G Wheel base (Center to center of wheels) | 3660 mm | 3660 mm | 3600 mm |
| H Crawler overall length | 4470 mm | 4470 mm | 4470 mm |
| I Track gauge NLC | 1990 mm | 1990 mm | 1990 mm |
| J Undercarriage NLC overall width (with 500 mm shoes) | 2490 mm | 2490 mm | 2490 mm |
| K Crawler tracks height | 920 mm | 920 mm | 920 mm |

Performance data



Monoboam

| | Arm 2.40 m | Arm HD 1.90 m | Arm 2.94 m |
|------------------------|------------|---------------|------------|
| Boom length | 5700 mm | 5700 mm | 5700 mm |
| Bucket radius | 1450 mm | 1450 mm | 1450 mm |
| Bucket wrist action | 177° | 177° | 177° |
| A Maximum reach at GRP | 9240 mm | 8770 mm | 9730 mm |
| B Maximum reach | 9420 mm | 8960 mm | 9900 mm |
| C Max. digging depth | 6110 mm | 5610 mm | 6650 mm |
| D Max. digging height | 9390 mm | 9140 mm | 9610 mm |
| E Max. dumping height | 6590 mm | 6330 mm | 6810 mm |

NLC 2 Piece boom

| | Arm 1,90 m | Arm 2,40 m | Arm 2,94 m |
|------------------------|------------|------------|------------|
| Boom length | 5670 mm | 5670 mm | 5670 mm |
| Bucket radius | 1450 mm | 1450 mm | 1450 mm |
| Bucket wrist action | 177° | 177° | 177° |
| A Maximum reach at GRP | 8750 mm | 9220 mm | 9720 mm |
| B Maximum reach | 8950 mm | 9420 mm | 9900 mm |
| C Max. digging depth | 5310 mm | 5800 mm | 6320 mm |
| D Max. digging height | 10210 mm | 10580 mm | 10940 mm |
| E Max. dumping height | 7320 mm | 7680mm | 8040 mm |

Digging force

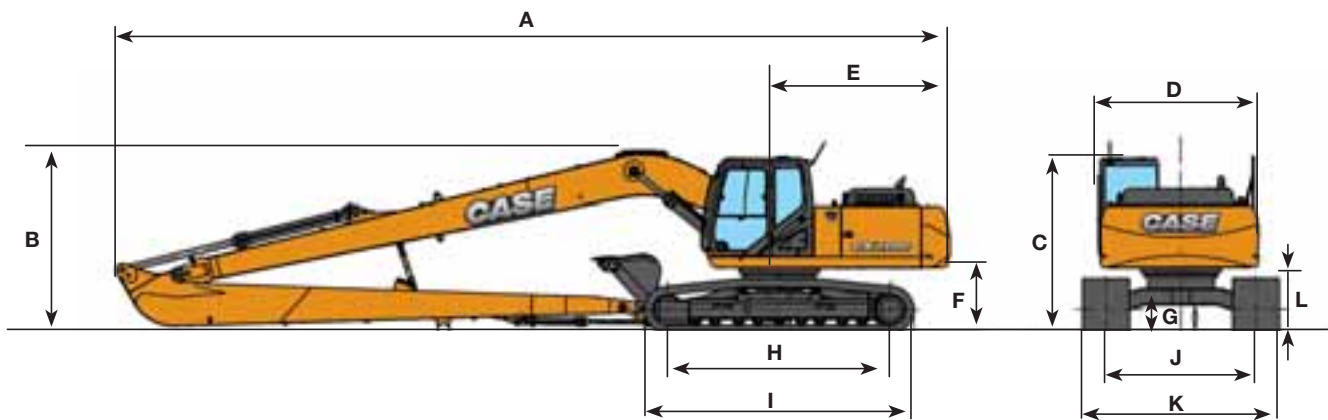
With 1.0 m³ bucket (ISO 6015)

| | Arm 2.40 m | Arm HD 1.90 m | Arm 2.94 m |
|-------------------------|------------|---------------|------------|
| Arm digging force | 123 kN | 142 kN | 103 kN |
| - with auto power boost | 132 kN | 152 kN | 110 kN |
| Bucket digging force | 142 kN | 142 kN | 142 kN |
| - with auto power boost | 152 kN | 152 kN | 152 kN |

CX C-SERIES HYDRAULIC EXCAVATORS

CX210C LONG REACH

General dimensions



Arm 6.40 m

| | | |
|---|--|----------|
| | Overall length (without attachment) | 4960 mm |
| A | Overall length (with attachment) | 12470 mm |
| B | Overall height (with attachment) | 3070 mm |
| C | Cab height | 3070 mm |
| D | Upper structure overall width | 2770 mm |
| E | Swing (rear end radius) | 2750 mm |
| F | Clearance height under upper structure | 1040 mm |
| G | Minimum ground clearance | 440 mm |
| H | Wheel base (Center to center of wheels) | 3660 mm |
| I | Crawler overall length | 4470 mm |
| J | Track gauge | 2390 mm |
| K | Undercarriage overall width (with 800 mm shoes) | 3190 mm |
| L | Crawler tracks height | 920 mm |

CX C-SERIES HYDRAULIC EXCAVATORS

CX250C





CX C-SERIES HYDRAULIC EXCAVATORS

CX250C

Specifications

Engine

Model _____ ISUZU AL-4HK1X
Type _____ Water-cooled, 4-cycle diesel, 4-cylinder in line, Electronically controlled, high pressure common rail system, variable geometry turbocharger, air cooled intercooler, dual exhaust gas recirculation, DPD system with auto-regeneration. Tier 4 interim certified.
Number of cylinders/displacement _____ 4/5.19 l
Bore/Stroke _____ 115 x 125 mm
Horsepower 80/1269/EEC _____ 132 kw @ 2000 min⁻¹
Maximum torque 80/1269/EEC _____ 621 Nm @ 1800 min⁻¹

Hydraulic system

Max oil flow _____ 2 x 234 l/min @ 2000 min⁻¹
2 variable displacement axial piston pumps with regulating system
Boom/Arm/Bucket _____ 36.8 MPa
Swing circuit _____ 27/28.9 MPa
Travel _____ 34.3 MPa

Swing

Maximum swing speed _____ 10.6 rpm

Travel

Travel motor _____ Variable displacement axial piston motor
Max travel speed _____ 5.5 km/h (Automatic travel speed shifting)
Low travel speed _____ 3.5 km/h
Gradeability _____ 70% (35°)
Drawbar pull _____ 201 kN

Electrical system

Circuit _____ 24V
Alternator _____ 50 Amp

Undercarriage

Number of carriers rollers (each side) _____ 2
Number of track rollers (each side) _____ 9
Number of shoes (each side) _____ 51
Type of shoe _____ Triple grouser shoe

Circuit and component capacities

Fuel tank _____ 410 l
Hydraulic system _____ 250 l
Cooling system _____ 30.2 l

Weight and ground pressure

With 3.00 m Arm, 1.1 m³ bucket, operator, lubricant, coolant, full fuel tank and top guard OPG level 2

| CX250C LC | Weight (kg) | Ground pressure (MPa) |
|---------------------|-------------|-----------------------|
| 600 mm grouser shoe | 24.800 | 0.049 |
| 700 mm grouser shoe | 25.100 | 0.043 |
| 800 mm grouser shoe | 25.400 | 0.038 |
| 900 mm grouser shoe | 25.700 | 0.034 |

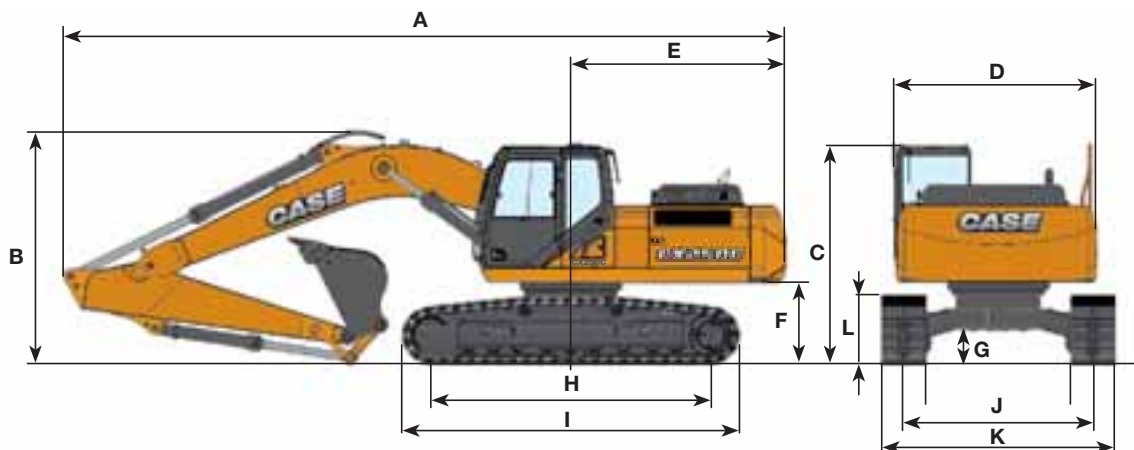
| CX250C NLC | Weight (kg) | Ground pressure (MPa) |
|---------------------|-------------|-----------------------|
| 600 mm grouser shoe | 24.700 | 0.049 |
| 700 mm grouser shoe | 25.000 | 0.042 |

With 8.00 m arm, 0.37m³ bucket, operator, lubricant, coolant, full fuel tank and top guard OPG level 2

| CX250C LC long reach | Weight (kg) | Ground pressure (MPa) |
|----------------------|-------------|-----------------------|
| 800 mm grouser shoe | 28.100 | 0.042 |

General dimensions

With 5.85 m standard boom



LC / NLC

| | Arm 3.00 m | Arm HD 2.50 m | Arm 3.52 m |
|---|------------|---------------|------------|
| Overall length (without attachment) | 5270 mm | 5270 mm | 5270 mm |
| A Overall length (with attachment) | 9880 mm | 9950 mm | 9910 mm |
| B Overall height (with attachment) | 3200 mm | 3350 mm | 3360 mm |
| C Cab height | 3130 mm | 3130 mm | 3130 mm |
| D Upper structure overall width | 2770 mm | 2770 mm | 2770 mm |
| E Swing (rear end radius) | 2950 mm | 2950 mm | 2950 mm |
| F Clearance height under upper structure | 1100 mm | 1100 mm | 1100 mm |
| G Minimum ground clearance | 460 mm | 460 mm | 460 mm |
| H Wheel base (Center to center of wheels) | 3840 mm | 3840 mm | 3840 mm |
| I Crawler overall length | 4650 mm | 4650 mm | 4650 mm |
| L Crawler tracks height | 940 mm | 940 mm | 940 mm |

LC

| | Arm 3.00 m | Arm HD 2.50 m | Arm 3.52 m |
|---|------------|---------------|------------|
| J Track gauge | 2590 mm | 2590 mm | 2590 mm |
| K Undercarriage overall width (with 600 mm shoes) | 3190 mm | 3190 mm | 3190 mm |

NLC

| | Arm 3.00 m | Arm HD 2.50 m | Arm 3.52 m |
|---|------------|---------------|------------|
| J Track gauge | 2390 mm | 2390 mm | 2390 mm |
| K Undercarriage overall width (with 600 mm shoes) | 2990 mm | 2990 mm | 2990 mm |

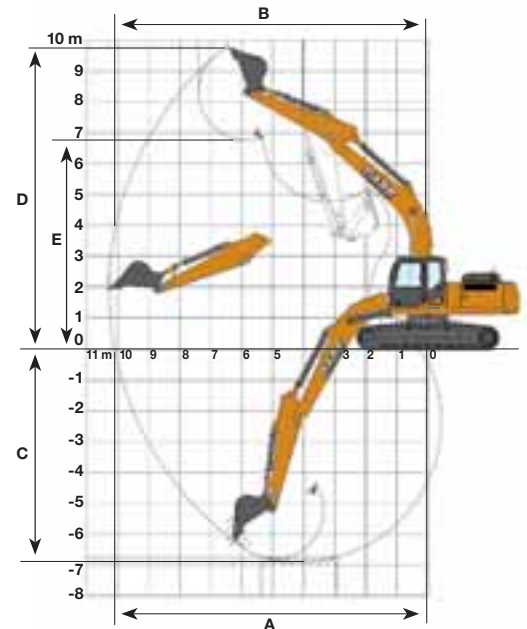
CX C-SERIES HYDRAULIC EXCAVATORS

CX250C

Performance data

With 5.85 m standard boom

| LC / NLC | Arm 3.00 m | Arm HD 2.50 m | Arm 3.52 m |
|------------------------|------------|----------------------|------------|
| Boom length | 5850 mm | 5850 mm | 5850 mm |
| Bucket radius | 1570 mm | 1570 mm | 1570 mm |
| Bucket wrist action | 175° | 175° | 175° |
| A Maximum reach at GRP | 10100 mm | 9630 mm | 10620 mm |
| B Maximum reach | 10280 mm | 9820 mm <td 10790 mm | |
| C Max. digging depth | 6900 mm | 6400 mm | 7420 mm |
| D Max. digging height | 9760 mm | 9560 mm | 10070 mm |
| E Max. dumping height | 6760 mm | 6550 mm | 7060 mm |
| Arm digging force | 120 kN | 141 kN | 107 kN |
| - with auto power up | 129 kN | 151 kN | 115 kN |
| Bucket digging force | 162 kN | 162 kN | 162 kN |
| - with auto power up | 174 kN | 174 kN | 174 kN |



Lifting capacity

| Front | REACH | | | | | | |
|-------|-------|-------|-------|-------|-------|-------|--------------|
| | 1.5 m | 3.0 m | 4.5 m | 6.0 m | 7.5 m | 9.0 m | At max reach |

LC - Standard arm. 2.5 m HD arm length, 1.30 m³ bucket, 600G shoes, max reach 9.46 m

| | | | | | | | | | | | | | | |
|--------|--------|--------|--------|--------|--------|-------|-------|-------|-------|------|--|-------|-------|------|
| 7.5 m | | | | | | | | 4130* | 4130* | | | 3430* | 3430* | 7.64 |
| 6.0 m | | | | | | | | 5330* | 4500 | | | 3260* | 3260* | 8.61 |
| 4.5 m | | | | 6270* | 6270* | 6650* | 6350 | 6020* | 4360 | | | 3240* | 2970 | 9.18 |
| 3.0 m | | | 12580* | 12580* | 10120* | 9610 | 7850* | 6060 | 6350 | 4180 | | 3320* | 2750 | 9.44 |
| 1.5 m | | | | | 12110* | 8920 | 8850 | 5720 | 6180 | 4010 | | 3500* | 2700 | 9.42 |
| 0 m | | | 8500* | 8500* | 13430* | 8510 | 8640 | 5470 | 6030 | 3870 | | 3820* | 2800 | 9.16 |
| -1.5 m | 9640* | 9640* | 12090* | 12090* | 13360* | 8460 | 8530 | 5380 | 5980 | 3830 | | 4400* | 3090 | 8.63 |
| -3.0 m | 12110* | 12110* | 17470* | 16990 | 12730* | 8580 | 8600 | 5460 | 6100 | 3950 | | 5440* | 3670 | 7.79 |
| -4.5 m | 17470* | 17470* | 15510* | 15510* | 10920* | 8860 | 7760* | 5740 | | | | 6440* | 4910 | 6.53 |

NLC - Standard arm. 2.5 m HD arm length, 1.30 m³ bucket, 600G shoes, max reach 9.46 m

| | | | | | | | | | | | | | | | |
|--------|--------|--------|--------|--------|--------|-------|-------|------|-------|-------|-------|------|-------|-------|------|
| 7.5 m | | | | | | | | | 4130* | 4130* | | | 3430* | 3430* | 7.64 |
| 6.0 m | | | | | | | | | 5330* | 4120 | | | 3260* | 3120 | 8.61 |
| 4.5 m | | | | | 6270* | 6270* | 6650* | 5860 | 6020* | 3990 | 4350* | 2810 | 3240* | 2690 | 9.18 |
| 3.0 m | | | 12590* | 12590* | 10120* | 8750 | 7850* | 5530 | 6340 | 3810 | 4650 | 2730 | 3320* | 2480* | 9.44 |
| 1.5 m | | | | | 12110* | 8050 | 8830 | 5200 | 6160 | 3630 | 4560 | 2650 | 3500* | 2430 | 9.42 |
| 0 m | | | 8500* | 8500* | 13430* | 7650 | 8620 | 4950 | 6010 | 3500 | 4500 | 2600 | 3820* | 2520 | 9.16 |
| -1.5 m | 9640* | 9640* | 12090* | 12090* | 13360* | 7600 | 8510 | 4860 | 5960 | 3460 | | | 4400* | 2780 | 8.63 |
| -3.0 m | 12210* | 12210* | 17470* | 15620 | 12730* | 7720 | 8580 | 4940 | 6090 | 3580 | | | 5440* | 3320 | 6.53 |
| -4.5 m | 17470* | 17470* | 15510* | 15440 | 10920* | 8010 | 7760* | 5250 | | | | | 6440* | 4450 | 7.18 |

| Front 360° | REACH | | | | | | | m |
|---------------|-------|-------|-------|-------|-------|-------|--------------|---|
| | 1.5 m | 3.0 m | 4.5 m | 6.0 m | 7.5 m | 9.0 m | At max reach | |

LC - Standard arm. 3.0 m arm length, 1.11 m³ bucket, 600G shoes, max reach 9.92 m

| | | | | | | | | | | | | | | | |
|--------|---------|---------|---------|---------|---------|--------|--------|--------|--------|--------|--------|--------|--------|--------|------|
| 7.5 m | | | | | | | | 4150 * | 4150 * | 2370 * | 2370 * | | | 8.23 | |
| 6.0 m | | | | | | | | 4800 * | 4630 | 2830 * | 2830 * | 2250 * | 2250 * | 9.12 | |
| 4.5 m | | | | | | 6180 * | 6180 * | 5640 * | 4480 | 4470 * | 3200 | 2230 * | 2230 * | 9.66 | |
| 3.0 m | | | 13430 * | 13430 * | 9720 * | 9670 | 7450 * | 6220 | 6280 * | 4290 | 4750 | 3100 | 2290 * | 2290 | 9.9 |
| 1.5 m | | | 9390 * | 9390 * | 12020 * | 9170 | 8650 * | 5850 | 6270 | 4090 | 4640 | 3000 | 2430 * | 2430 * | 9.89 |
| 0 m | | | 9250 * | 9250 * | 13280 * | 8650 | 8750 | 5570 | 6100 | 3930 | 4550 | 2920 | 2660 * | 2610 | 9.64 |
| -1.5 m | 8880 * | 8880 * | 11800 * | 11800 * | 13470 * | 8490 | 8580 | 5420 | 6000 | 3850 | 4146 * | 2910 | 3060 * | 2840 | 9.13 |
| -3.0 m | 10960 * | 10960 * | 15870 * | 15870 * | 13100 * | 8560 | 8590 | 5450 | 6060 | 3910 | | | 3760 * | 3300 | 8.34 |
| -4.5 m | 15110 * | 15110 * | 17030 * | 17030 * | 11760 * | 8780 | 8560 * | 5660 | | | | | 5190 * | 4240 | 7.18 |
| -6.0 m | | | 12270 * | 12270 * | 8430 * | 8430 * | | | | | | | 6020 * | 6020 * | 5.44 |

NLC - Standard arm. 3.0 m arm length, 1.11 m³ bucket, 600G shoes, max reach 9.92 m

| | | | | | | | | | | | | | | | |
|--------|---------|---------|---------|---------|---------|--------|--------|--------|--------|--------|--------|--------|--------|--------|------|
| 7.5 m | | | | | | | | 4150 * | 4150 * | | | 2370 * | 2370 * | 8.23 | |
| 6.0 m | | | | | | | | 4800 * | 4240 | 2830 * | 2830 * | 2250 * | 2250 * | 9.12 | |
| 4.5 m | | | | | | 6180 * | 5950 * | 5640 * | 4100 | 4470 * | 2910 | 2230 * | 2230 * | 9.66 | |
| 3.0 m | | | 13430 * | 13430 * | 9720 * | 8950 | 7450 * | 5680 | 6280 * | 3910 | 4730 | 2810 | 2290 * | 2290 * | 9.9 |
| 1.5 m | | | 9390 * | 9390 * | 12020 * | 8290 | 8650 * | 5320 | 6260 | 3720 | 4620 | 2710 | 2430 * | 2270 | 9.89 |
| 0 m | | | 9250 * | 9250 * | 13280 * | 7790 | 8720 | 5040 | 6080 | 3560 | 4540 | 2630 | 2660 * | 2340 | 9.64 |
| -1.5 m | 8880 * | 8880 * | 11800 * | 11800 * | 13470 * | 7640 | 8550 | 4900 | 5990 | 3480 | 1460 * | 2630 | 3060 * | 2560 | 9.13 |
| -3.0 m | 10960 * | 10960 * | 15870 * | 14870 | 13100 * | 7700 | 8570 | 4930 | 6040 | 3540 | | | 3760 * | 2980 | 8.34 |
| -4.5 m | 15110 * | 15110 * | 17030 * | 15690 | 11760 * | 7920 | 8560 * | 5140 | | | | | 5190 * | 3840 | 7.18 |
| -6.0 m | | | 12270 * | 12270 * | 8430 * | 8070 | | | | | | | 6020 * | 6020 * | 5.44 |

LC - Standard arm. 3.5 m arm length, 1.00 m³ bucket, 600G shoes, max reach 10.4 m

| | | | | | | | | | | | | | | | |
|--------|---------|---------|---------|---------|---------|--------|--------|--------|--------|--------|------|--------|--------|--------|-------|
| 9.0 m | | | | | | | | 2240 * | 2240 * | | | 2120 * | 2120 * | 7.57 | |
| 7.5 m | | | | | | | | 3300 * | 3300 * | | | 1890 * | 1890 * | 8.85 | |
| 6.0 m | | | | | | | | 4330 * | 4330 * | 3490 * | 3310 | 1790 * | 1790 * | 9.68 | |
| 4.5 m | | | | | | | | 5160 * | 4540 | 4290 | 3230 | 1770 * | 1770 * | 10.18 | |
| 3.0 m | | | | | 8770 * | 8770 * | 6910 * | 6300 | 5870 * | 4330 | 4770 | 3120 | 1820 * | 1820 * | 10.41 |
| 1.5 m | | | 13400 * | 13400 * | 11220 * | 9340 | 8200 * | 5920 | 6300 | 4110 | 4640 | 3000 | 1920 * | 1920 * | 10.40 |
| 0 m | 4270 * | 4270 * | 9690 * | 9690 * | 12850 * | 8710 | 8770 | 5580 | 6100 | 3920 | 4530 | 2900 | 2100 * | 2100 * | 10.16 |
| -1.5 m | 7650 * | 7650 * | 11290 * | 11290 | 13400 * | 8340 | 8540 | 5380 | 5960 | 3800 | 4470 | 2840 | 2400 * | 2400 * | 9.68 |
| -3.0 m | 9810 * | 9810 * | 14490 * | 14490 * | 13220 * | 8440 | 8510 | 5360 | 5970 | 3810 | | | 2900 * | 2900 * | 8.94 |
| -4.5 m | 14320 * | 14320 * | 18150 * | 17430 | 12290 * | 8610 | 8580 | 5500 | 6060 | 3960 | | | 3860 * | 3610 | 7.86 |
| -6.0 m | | | 14320 * | 14320 * | 9860 | 8820 | 6680 | 5690 | | | | | 5850 * | 5220 | 6.30 |

NLC - Standard arm. 3.5 m arm length, 1.00 m³ bucket, 600G shoes, max reach 10.4 m

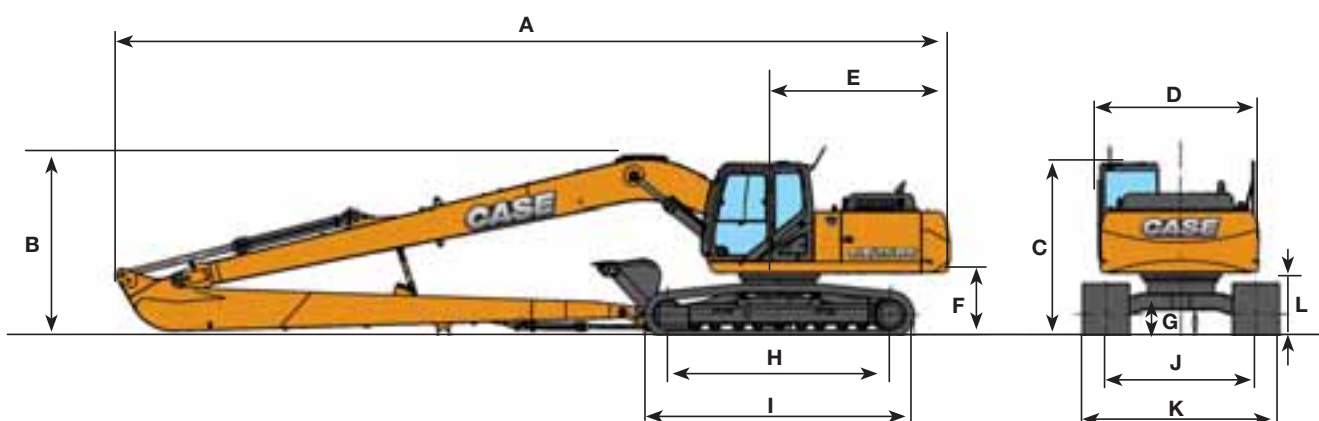
| | | | | | | | | | | | | | | | |
|--------|---------|---------|---------|---------|---------|--------|--------|--------|--------|--------|------|--------|--------|--------|-------|
| 9.0 m | | | | | | | | 2240 * | 2240 * | | | 2120 * | 2120 * | 7.57 | |
| 7.5 m | | | | | | | | 3300 * | 3300 * | | | 1890 * | 1890 * | 8.85 | |
| 6.0 m | | | | | | | | 4330 * | 4250 * | 3490 * | 3020 | 1790 * | 1790 * | 9.68 | |
| 4.5 m | | | | | | | | 5160 * | 4160 | 4290 | 2950 | 1770 * | 1770 * | 10.18 | |
| 3.0 m | | | | | 8770 * | 8770 * | 6910 * | 5780 | 5870 * | 3960 | 4760 | 2840 | 1820 * | 1820 * | 10.41 |
| 1.5 m | | | 13400 * | 13400 * | 11220 * | 8460 | 8200 * | 5390 | 6290 | 3740 | 4630 | 2720 | 1920 * | 1920 * | 10.40 |
| 0 m | 4270 * | 4270 * | 9690 * | 9690 * | 12850 * | 7860 | 8760 | 5070 | 6090 | 3560 | 4520 | 2610 | 2100 * | 2100 * | 10.16 |
| -1.5 m | 7650 * | 7650 * | 11290 * | 11290 | 13400 * | 7580 | 8530 | 4860 | 5960 | 3440 | 4460 | 2560 | 2400 * | 2280 | 9.68 |
| -3.0 m | 9810 * | 9810 * | 14490 * | 14490 * | 13220 * | 7600 | 8490 | 4850 | 5960 | 3450 | | | 2900 * | 2610 | 8.94 |
| -4.5 m | 14320 * | 14320 * | 18150 * | 15540 | 12290 * | 7770 | 8570 | 4990 | 6050 | 3600 | | | 3860 * | 3270 | 7.86 |
| -6.0 m | | | 14320 * | 14320 * | 9860 | 8070 | 6680 | 5220 | | | | | 5850 * | 4740 | 6.30 |

* Hydraulic capacity 87%

CX C-SERIES HYDRAULIC EXCAVATORS

CX250C LONG REACH

General dimensions



Arm 8.00 m

| | | |
|---|--|----------|
| | Overall length (without attachment) | 5270 mm |
| A | Overall length (with attachment) | 14380 mm |
| B | Overall height (with attachment) | 3130 mm |
| C | Cab height | 3130 mm |
| D | Upper structure overall width | 2770 mm |
| E | Swing (rear end radius) | 2950 mm |
| F | Clearance height under upper structure | 1100 mm |
| G | Minimum ground clearance | 460 mm |
| H | Wheel base (Center to center of wheels) | 3840 mm |
| I | Crawler overall length | 4650 mm |
| J | Track gauge | 2590 mm |
| K | Undercarriage overall width (with 800 mm shoes) | 3390 mm |
| L | Crawler tracks height | 940 mm |

Standard Equipment CX210C

ENGINE
Isuzu 4-cylinder turbodiesel in line
Certified Tier 4 interim (CEGR)
Electronic fuel injection
High pressure common rail system
Variable geometry turbo charger
Cooled Exhaust Gas Recirculation (CEGR)
Diesel Particulate Diffuser (DPD)
(Diesel Oxidation Catalyst DOC + Diesel Particulate Filter DPF)
Neutral safety start
Auto-engine warm up, emergency stop
Glow-plug pre-heat
Idle System:
Auto-idle
One-touch idle
Idle shut-down
EPF (Engine Protection Feature)

Dual-stage fuel filtration
Dual element air filter
Remote oil filter
Green plug oil drain
500-hour engine oil change interval
Refuelling Pump
HYDRAULICS
Auto power boost
Auto swing priority
Auto travel speed change
Selectable work modes
Overload warning device
SWC - SWING RELIEF CONTROL
SSC - SPOOL STROKE CONTROL
BEC - BOOM ECONOMY CONTROL
AEC - AUTO ECONOMY CONTROL
SEC - SWING ECONOMY CONTROL
ISO pattern controls
Pre-set auxiliary pump settings

Switch controlled auxiliary selection
10 x auxiliary flow settings in memory
Auxiliary valve
Auxiliary pipe brackets
5,000 hour hydraulic oil change interval
1,000 hour hydraulic filter change interval
Hydraulic track adjustment
SAHR brake
UPPERSTRUCTURE
4-point isolation mounted cab (fluid and spring)
Common key vandal locks
Swivel guard belly pan
Rear view safety camera
ATTACHMENTS
Standard boom 5.70 m

Arm HD 2.40 m
EMS bushings
Bucket linkage with hook
Boom mounted work light (70 watt)
Auxiliary pipe brackets
Centralized lube bank
Attachment cushion valve
Arm and boom regeneration
Safety valves on boom and arm cylinders with overload warning device
OPERATOR STATION
Interior dome light (10W)
ROPS/FOPS level 1 cab
FOPS guard OPG level II on cab roof
Pressurized cab
Tempered safety glass
One-touch lock front window
Sun visor & rain deflector

AC/heat/defrost w/ auto climate control
Hot & coolbox, cup holder & ashtray
Interior dome light
Cloth covered air-suspension seat
Seat-belt
Adjustable armrests
Tilting consoles - 4-position
Low-effort controls (short)
Sliding cockpit (180 mm)
Controls pre-wired for auxiliary
Auxiliary select system
Straight travel
Aux-in port for personal electronics
Multifunction color monitor
Rear-view camera
Anti-theft system (start code system)
Rubber floor mat

12-volt electric socket
24-volt cigarette lighter
One-piece right hand window
2 internal & 3 external view mirrors
2 working lights (boom & upperstructure)
Beacon harness
2 cab top working lights
Windshield wiper / washer
Clear (Lexan) roof window w/ sunshade
Storage compartments
On-board diagnostic system
UNDERCARRIAGE
600 mm steel shoes, triple semigrouser
Strutted and sealed link
Full overlap turntable bearing tub
Single track guide

Optional Equipment CX210C / CX210C LONG REACH

HYDRAULICS
Auxiliary Hydraulics -
Single acting breaker circuit
Multifunction circuit w pressure control
Low-flow circuit

ATTACHMENTS
Long Reach boom and arm
Arm - 1.90 m HD / 2.94 m
Hydr. or mech quickcoupler
Buckets: Extreme / Heavy duty / GP / ditching

Hammers, shears, grapples
OPERATOR STATION
Front cab guard - vertical bars (OPG level 2)
Front cab guard - vertical bars

(OPG level 1)
Front mesh screen
AM/FM radio w/ antenna and 2-speakers
Side-view camera
UPPERSTRUCTURE

Auto centralized greasing system
Rubber bumper guard (order through Service Parts)
UNDERCARRIAGE
Steel shoes, triple semi-grouser

700 mm, 800mm
900 mm steeltracks for swamp only, 600mm rubber link chains
Triple track guide
High ambient heat package - 45-50°C (Tropical Package)

Standard Equipment CX250C

ENGINE
Isuzu 4-cylinder turbodiesel in line
Certified Tier 4 interim (CEGR)
Electronic fuel injection
High pressure common rail system
Variable geometry turbo charger
Cooled Exhaust Gas Recirculation (CEGR)
Diesel Particulate Diffuser (DPD)
(Diesel Oxidation Catalyst DOC + Diesel Particulate Filter DPF)
Neutral safety start
Auto-engine warm up, emergency stop
Glow-plug pre-heat
Idle System:
Auto-idle
One-touch idle
Idle shut-down
EPF (Engine Protection Feature)

Dual-stage fuel filtration
Dual element air filter
Remote oil filter
Green plug oil drain
500-hour engine oil change interval
Refuelling Pump
HYDRAULICS
Auto power boost
Auto swing priority
Auto travel speed change
Selectable work modes
Overload warning device
SWC - SWING RELIEF CONTROL
SSC - SPOOL STROKE CONTROL
BEC - BOOM ECONOMY CONTROL
AEC - AUTO ECONOMY CONTROL
SEC - SWING ECONOMY CONTROL
ISO pattern controls
Pre-set auxiliary pump settings

Switch controlled auxiliary selection
10 x auxiliary flow settings in memory
Auxiliary valve
Auxiliary pipe brackets
5,000 hour hydraulic oil change interval
1,000 hour hydraulic filter change interval
Hydraulic track adjustment
SAHR brake
UPPERSTRUCTURE
4-point isolation mounted cab (fluid and spring)
Common key vandal locks
Swivel guard belly pan
Rear view safety camera
ATTACHMENTS
Standard boom 5.85 m
Arm 3.00 m

EMS bushings
Bucket linkage with hook
Boom mounted work light (70 watt)
Auxiliary pipe brackets
Centralized lube bank
Attachment cushion valve
Arm and boom regeneration
Safety valves on boom and arm cylinders with overload warning device
OPERATOR STATION
Interior dome light (10W)
ROPS/FOPS level 1 cab
FOPS guard OPG level II on cab roof
Pressurized cab
Tempered safety glass
One-touch lock front window
Sun visor & rain deflector
AC/heat/defrost w/ auto climate control

Hot & coolbox, cup holder & ashtray
Interior dome light
Cloth covered air-suspension seat
Seat-belt
Adjustable armrests
Tilting consoles - 4-position
Low-effort controls (short)
Sliding cockpit (180 mm)
Controls pre-wired for auxiliary
Auxiliary select system
Straight travel
Aux-in port for personal electronics
Multifunction color monitor
Rear-view camera
Anti-theft system (start code system)
Rubber floor mat
12-volt electric socket
24-volt cigarette lighter
One-piece right hand window

2 internal & 3 external view mirrors
2 working lights (boom & upperstructure)
Beacon harness
2 cab top working lights
Windshield wiper / washer
Clear (Lexan) roof window w/ sunshade
Storage compartments
On-board diagnostic system
UNDERCARRIAGE
600 mm steel shoes, triple semigrouser
Strutted and sealed link
Full overlap turntable bearing tub
Single track guide

Optional Equipment CX250C / CX250C LONG REACH

HYDRAULICS
Auxiliary Hydraulics -
Single acting breaker circuit
Multifunction circuit w pressure control
Low-flow circuit

ATTACHMENTS
Long Reach boom and arm
Boom 5.85 m HD
Arm - 2.50 m / 3.52 m
Arm Heavy Duty - 2.50 m / 3.00 m

Hydr. or mech quickcoupler
Buckets: Extreme / Heavy duty / GP / ditching
Hammers, shears, grapples
OPERATOR STATION
Front cab guard - vertical bars

(OPG level 2)
Front cab guard - vertical bars (OPG level 1)
Front mesh screen
AM/FM radio w/ antenna and 2-speakers

Side-view camera
UPPERSTRUCTURE
Auto centralized greasing system
Rubber bumper guard (order through Service Parts)

UNDERCARRIAGE
Steel shoes, triple semi-grouser
700 mm
Steel shoes, triple semi-grouser
800 mm, 900 mm (LC only)
Triple track guide

Standard and optional equipment shown can vary by country.

Worldwide Case Construction Equipment Contact Information

EUROPE:
via Plava, 80
10135 TORINO - ITALIA

AFRICA/MIDDLE EAST/CIS:
Riva Paradiso 14
6902 Paradiso - SWITZERLAND

NORTH AMERICA/MEXICO:
700 State Street
Racine, WI 53404 U.S.A.

LATIN AMERICA:
Av. General David Sarnoff 2237
32210 - 900 Contagem - MG
Belo Horizonte BRAZIL

ASIA PACIFIC:
Unit 1 - 1 Foundation Place - Prospect
New South Wales - 2148 AUSTRALIA

CHINA:
No. 29, Industrial Premises, No. 376.
De Bao Road, Waigaoqiao Ftz, Pudong,
SHANGHAI, 200131, P.R.C.

CASE Construction Equipment

CNH UK Ltd
Unit 4, Hayfield Lane Business Park,
Field Lane, Auckley, Doncaster,
DN9 3FL
Tel. 00800-2273-7373
Fax +44 1302 802829



CASE Customer Assistance
00800-2273-7373

The call is free from a land line. Check in advance with your Mobile Operator if you will be charged.



NOTE: Standard and optional fittings can vary according to the demands and specific regulations of each country. The illustrations may include optional rather than standard fittings - consult your Case dealer. Furthermore, CNH reserves the right to modify machine specifications without incurring any obligation relating to such changes.

Conforms to directive 98/37/CE

